

## HSM CP 4988



This efficient PET recycling system reduces the volume of empty PET bottles by up to 90 % in one cycle and produces compact raw material bales.

### Technical data

<b>Order number:</b>	6577144	<b>Throughput per hour PET bottles (1 litre):</b>	4000
<b>Bale weight:</b>	100 x 100 kg	<b>Dimensions of machine (WxDxH):</b>	990 x - x 1800 mm
<b>Working width:</b>	490 mm		

### Product Information:



Automatic photoelectric control of the pressing process - display to indicate "bale ready"



Manual, 3-fold strapping with continuous polyester strap - bale weight up to 100 kg



Manual and automatic filling possible

## Product Information:



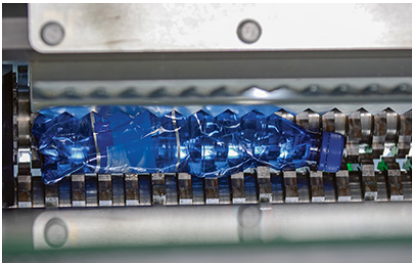
Throughput per hour up to 4000 PET bottles (1 litre)



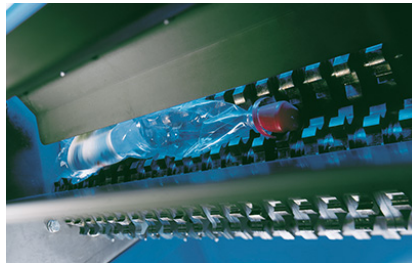
Efficient PET recycling system to reduce the volume of empty PET bottles by up to 90 % and produce compact raw material bales



A scraper system removes the compressed plastic bottles and cans from the crusher rollers to prevent blockages and downtime while clearing



A dosing shaft with integrated blades ensures that the plastic bottles and cans are fed reliably



Crusher rollers made of specially hardened and ground steel, completely resistant to wear and very strong, for a long service life

