

# HSM SECURIO C18 - 5.8 mm



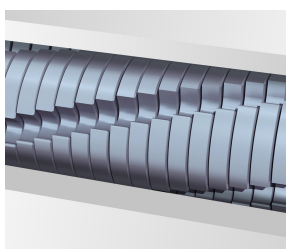
## HSM SECURIO C18 document shredder

Compact, functional and convenient. With cutting rollers made from hardened steel and a pressure-sensitive safety element. The quiet document shredder with a removable waste container – for demanding users in the private sector or small office.

### Technical data

<b>Order number:</b>	1911821	<b>Intake width:</b>	230 mm
<b>EAN</b>	4026631056786	<b>Container volume / collecting:</b>	25 l
<b>Cutting type:</b>	strip cut	<b>Collection volume in sheets (80 g):</b>	165
<b>Cutting size:</b>	5,8 mm	<b>Noise level (idle operation):</b>	ca. 55 - 58 dB(A)
<b>Security level (DIN 66399):</b>	E-2   O-2   P-2   T-2	<b>Width x Depth x Height:</b>	365 x 280 x 542 mm
<b>Cutting capacity in sheets 80g/m²:</b>	17 - 19	<b>Weight:</b>	9,8 kg
<b>Power consumption:</b>	360 W	<b>Shredder material:</b>	Paper, Staples and paper clips, Credit card, CD/DVD
<b>Voltage / Frequency:</b>	220-240 V / 50 Hz		

### Product information



The hardened steel cutting rollers with a lifetime warranty can easily cope with staples and paper clips and guarantee durability.

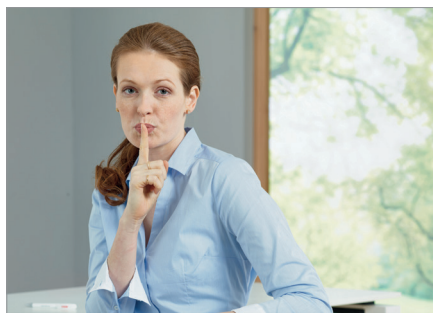


In stand-by mode, intelligent control programme EcoSmart ensures there is an exceptionally low power consumption of 0.1 watts.



The full bin is indicated via the display and the machine switches off automatically.

# HSM®



### Quiet operation

The quiet operating mode minimises noise development in the workplace which is an important consideration for your staff.



### Blue Angel

The document shredder has been awarded the Blue Angel certificate for its durable construction, low energy consumption and the use of environmentally friendly materials.



### Anti-paper jam function

The paper feed with overload protection reduces paper jams and sustains the high throughput of paper.



### High level of user safety

User safety is paramount. A slight pressure on the safety element immediately stops the paper feed and prevents unintentional entry into the machine.



### Automatic start/stop

The operation is very easy: the device starts automatically when fed paper and automatically stops after shredding is complete.

